

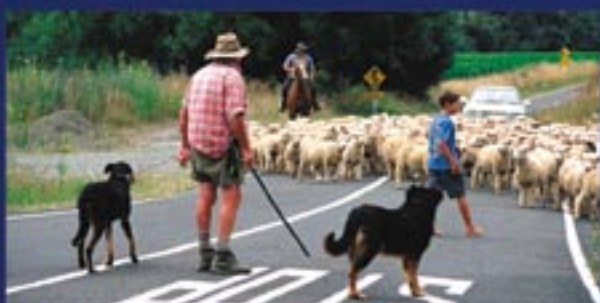
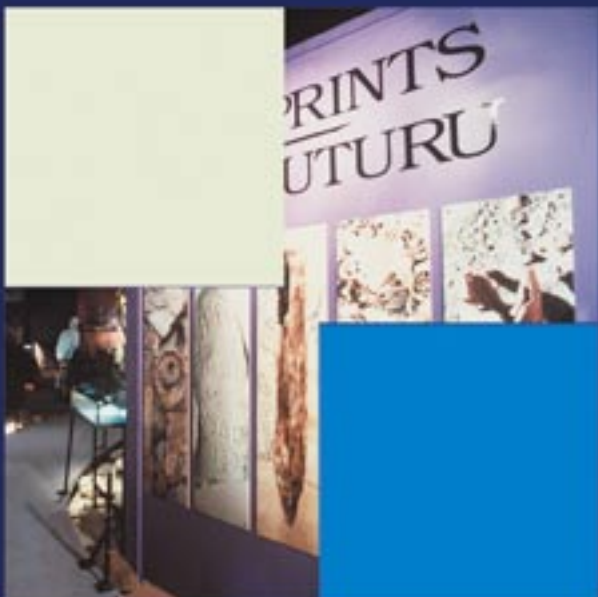
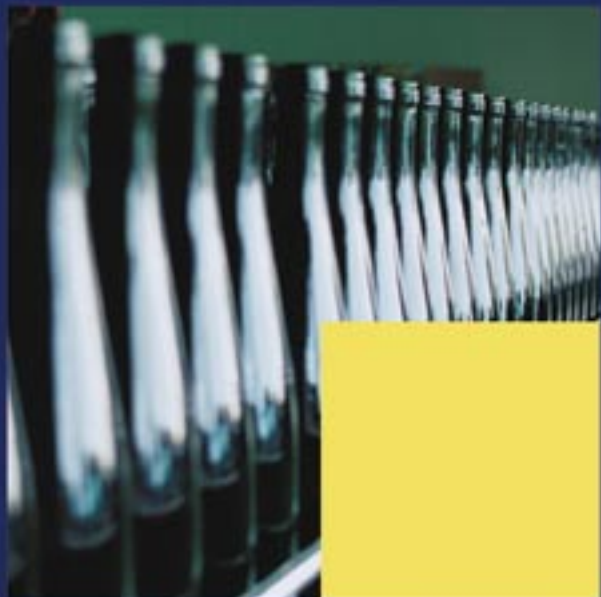
Gisborne

District

NEW ZEALAND

On the **World's Edge**





Gisborne District

On the World's Edge

Gisborne is the first city in the world to see the sun each day.

The Gisborne District, situated on the sunny east coast of New Zealand's North Island, is commonly referred to as the East Coast or Tairāwhiti. The Maori name Tairāwhiti means "the coast upon which the sun shines across the water".

Living in Gisborne means living on the Edge of the World, closest to the international dateline.

The knowledge that we're the first to greet each new day gives the people here an optimism and warmth of spirit found in very few areas.

There are certainly other locations around the globe with as much physical beauty and even more temperate climates than Gisborne, but those cities do not have the warmth and culture of a truly New Zealand community.

The warmth of Gisborne region residents is a true reflection of the blending of Western and Maori cultures. Although this coming together of two cultures has had shattering (but not wholly destructive) effects on the indigenous lifestyle, the charm of life on the Edge of the World is this extraordinary mix of cultures.

The history of New Zealand was born from the inquisitive minds of sea faring peoples at the cutting edge of sea exploration of that time. Gisborne features highly in the historical beginnings of New Zealand through the exploits of Captain Cook.

What is not readily recognized are the sea faring exploits of Maori, the indigenous people of New Zealand. There is common knowledge of the waka Horouta that came as part of the great migration. But there were others not so well known that came and inhabited the region bringing with them the many food plants which today supports a thriving industry in the region.

There were others that have played an important role in the history of New Zealand and Tairāwhiti in particular. The eponymous ancestor Paikea where history tells us that his journey to this country was in the accompaniment of a whale. Then there is the demi-god Maui whose feats are known throughout the Pacific.

Descendants of those waka established tribal groups in Gisborne and the wider reaches of the Gisborne region. Rongowhakaata, Ngai Tamanuhiri, Te Aitanga a Mahaki and Ngati Oneone establishing themselves in close proximity to Gisborne while Ngati Porou settled the East Coast of the Gisborne region.

Such feats in those days must be remembered as cutting edge feats, a trait that has been inherited today by the entire community.

European settlement was established in 1831 and the town that developed was named after colonial secretary Hon William Gisborne in 1870.



The Community

The Gisborne district is home to a vibrant and progressive community, serviced by a full range of modern amenities which provide a plethora of recreational opportunities. Gisborne City is part of a larger regional district that includes many smaller rural communities.

The **natural features** of the Gisborne District mean its people are able to enjoy outdoor recreation activities all year round. The long sunshine hours, extensive coastline of golden sandy beaches, unspoiled natural bush, and the stunningly beautiful lake and river areas invite popular involvement in water skiing, camping, tramping, boating, fishing (trout and deep sea), hunting and canoeing. Gisborne is legendary throughout New Zealand and overseas as a surfing mecca.

Recreational facilities in the Gisborne District include excellent golf courses of a top national standard, the Gisborne Tennis Centre, the Bushmere polo ground, and various bowling greens and cricket pitches. The area also enjoys sports stadia, national rugby playing fields and an acclaimed speedway track. In addition Gisborne City boasts two indoor swimming pools, field hockey facilities, a YMCA gymnasium and fitness centres, netball courts, and rivers and beaches used by rowing skulls, waka ama paddlers, surfers and swimmers.

Aquatic, Cycling, Karate, **Gym,**
Martial **Arts,** Netball, Soccer, Rowing
Surf Lifesaving, Field Hockey, Rugby
Fishing, Surfing, Soccer, Waka Ama
Cricket, **Handball** and Racquetball
Athletics, Yachting, Softball, Gardening
Trampolining, Badminton, **Triathlon,**
Jet Sprints, Rugby League
Kayaking, Chess, **Motocross,** Flying, Horse Racing



Population

Gisborne District	43,974
Urban Population (Gisborne City)	32,754
Rural Population	11,220

Source 2001 Census

Community organisations in the District are well supported, offering a myriad of clubs and hobbies, fine arts and crafts and musical aspects from choirs to dance and theatre. Included in these organisations are over 30 church groups and inter-denominational organisations. The City's numerous municipal facilities include excellent libraries, museums and theatres that stage some 40-plus performances every year.

Gastronomic delights abound in the Gisborne District. With its hot summers, fertile soil, reliable weather patterns and disease free, growing environment, the region produces some of the country's most delicious wines and produce. Those who enjoy dining out are spoilt for choice, with many excellent cafes, restaurants and wineries catering to locals and tourists throughout the year. The yearly International Chardonnay Challenge attracts winemakers from around the globe.

Gisborne City's ample **shopping district** in the central business district is a boulevard of wide streets lined with shady palm trees. National chain stores are well represented and local shops include larger outlets as well as unique boutique retailers. The central shopping district is complemented by smaller shopping villages spread throughout the City and district.

Tourism

Visitor Attractions on the World's Edge

A spectacular route, the unspoiled East Coast region is still one of the world's best-kept secrets... and from Gisborne, it's just a drive away. The Pacific Coast Highway runs along SH35, from Opotiki around the East Cape - it has inspired authors, poets, artists, wine lovers and anyone looking for time out from the stress of life in the fast lane.

Some of New Zealand's most exciting and consistent **surf** breaks are in the Gisborne District. Visitors to Gisborne's city beaches (Waikanae and Midway) enjoy safe swimming and surf conditions year round, while the beachside settlements of Wainui and Makorori just 10 minutes north produce waves for all styles of surfing. Further north are the stunning East Coast bays, and to the south is Mahia, a surfing mecca and popular summer camping spot. Many national and international surfers have been born and raised on the waves in and around Gisborne.

Regular **festivals** include the sensational Tuia Festival at New Year which culminates in a community fireworks extravaganza on New Year's Day. Food and wine lovers will delight in the annual Wine and Food Festival as well as the Taste Gisborne event - both are chances to sample the best of local produce.

Gisborne's vibrant community is continually coming up with new initiatives. The District gained international media attention when it "hosted the world" on 31 December 1999 /1 January 2000 - Gisborne City was the first city in the world to see the sunrise at the **dawn of the new millennium**. A "town clock party" attracts families and guests to the central business district every New Year's Eve.

As the site of the first meeting between Maori and European, the Gisborne District is one **rich in history**. Opportunities for historical walks, car journeys and site visits are numerous.

www.gisbornenz.com

www.destinationgisborne.co.nz

Visiting Authors (over 15 a year)

Cultural Festival, Miss Gisborne, Country &

Saturday Market,

Western Music,

Kapa Haka
Super 12

Education

Learning on the Edge

Gisborne District is home to an excellent education network including numerous pre-school opportunities, 53 primary schools, two intermediate schools, eight secondary schools, two polytechnics (one of which offers degree courses in co-operation with New Zealand universities) and a number of private tertiary institutes.

- **Pre-school and Primary Schools**

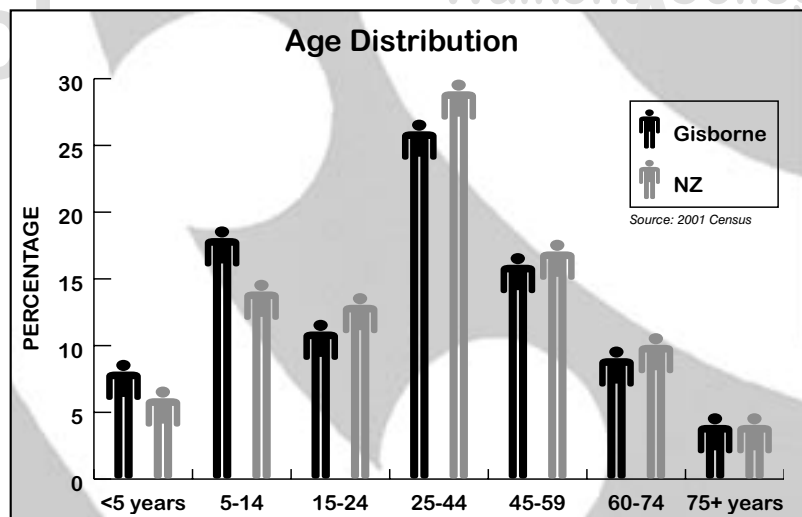
Gisborne's pre-school facilities range from standard kindergartens through Montessori, Kohanga Reo, childcare, playcentres, etc. Primary schools in the region have developed learning environments that are attractive and functional. Our schools are well advanced in integrating Information and Communications Technology (ICT) into learning programmes. There is a strong literacy and numeracy focus to assist children to acquire the skills they require to communicate effectively in the new millennium.

- **Secondary Schools**

Gisborne District's eight secondary schools include private and public, co-ed and single sex, boarding and day attendance. All high schools accept overseas students. Hostel facilities that welcome overseas students as well as local students are available in the city. The schools are well equipped for the challenges of modern teaching, and offer a wide range of courses.

- **Polytechnic**

Tairāwhiti Polytechnic in Gisborne City is a high quality tertiary education institution. Opened in 1982, it offers an extensive range of courses including arts/social science, business, automotive engineering, office systems, science/ technology and rural studies. The polytechnic has an excellent international division. Both local and overseas students may take advantage of the polytechnic's formal links with the University of Waikato, Massey University, Christchurch College of Education and others which allow Gisborne students to undertake degree programmes. The University of Aotearoa and the Open Polytechnic are also represented in Gisborne.



Healthcare

Great Health on the Edge

Tairāwhiti District Health provides health and disability services for an area of the East Coast which stretches from beyond Hicks Bay in the north, through Gisborne City and down to the Whārerata Ranges in the south.

Services are provided from Gisborne Hospital, Te Puia Springs Hospital, the Public Health Unit, two Primary Health Organisations (Turanga Health and Ngāti Porou Hauora), community health providers, community mental health facilities, rural health facilities, and directly to people in their homes.

- **Gisborne Hospital**

Gisborne's public hospital on Ormond Road was opened in 1985 and is one of the newest public hospitals in New Zealand. Its services include general surgery, orthopaedics, psychiatry, gynaecology, obstetrics, paediatric, intensive and coronary care, assessment and rehabilitation, accident and emergency, pathology, radiology, gerontology, physiotherapy, dietetics, occupational therapy, audiology, social work and domiciliary care.

For more information call 06 869-0500 or refer to www.tdh.org.nz

- **Chelsea Private Hospital Trust**

Chelsea Private Hospital is a modern 18-bed medical and surgical private hospital in the heart of the city. Most rooms have ensuite facilities. The hospital includes a specific children's suite. As well as the specialitists working within the district, Chelsea also hosts visiting doctors from out of town.

For more information call 06 867-2237 or email info@chelseahospital.co.nz

Creative Arts

First and Famous

Gisborne is the home of many authors, musicians, singers, artists and crafts people. The combination of exhilarating surroundings and warm individuals, results in cutting edge creative production. Internationally acclaimed movie "The Whale Rider" was filmed in the district.

Witi Ihimaera
Murray Ball
Mere Boynton

Dame Kiri Te Kanawa
Dame Anne Salmond
Graeme Mudge

Business

The Leading Edge

More than 2,500 businesses are located in the Gisborne district. The District's industrial progressiveness and successes are extensive.

The area is currently enjoying unprecedented economic expansion. In 2002, the Gisborne District recorded the highest year on year economic growth of any area in New Zealand.

Agriculture has been the most important economic industry for the region since the earliest settlement. However, agriculture has diversified over the years, and now forestry, viticulture, horticulture and related industries such as food processing are becoming increasingly important.

Relatively low overheads, and the benefits of modern communications are increasingly attracting niche market businesses. Wood processing is growing, with a five-fold increase in pine production forecast by 2020.

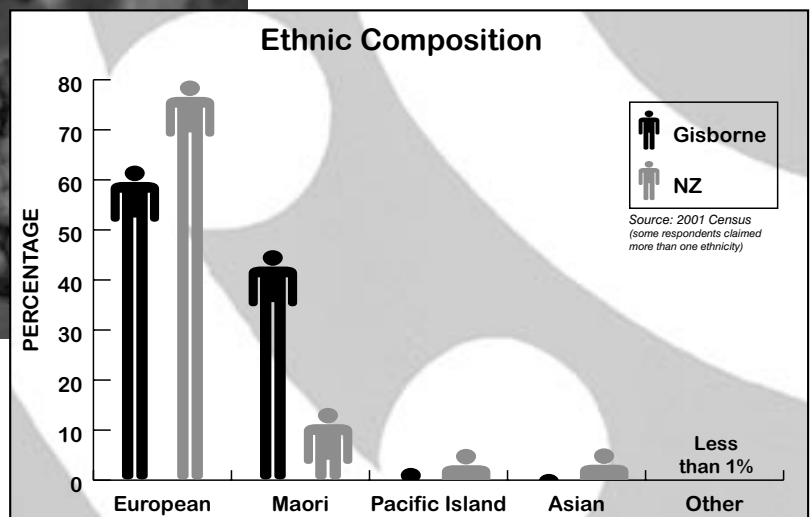
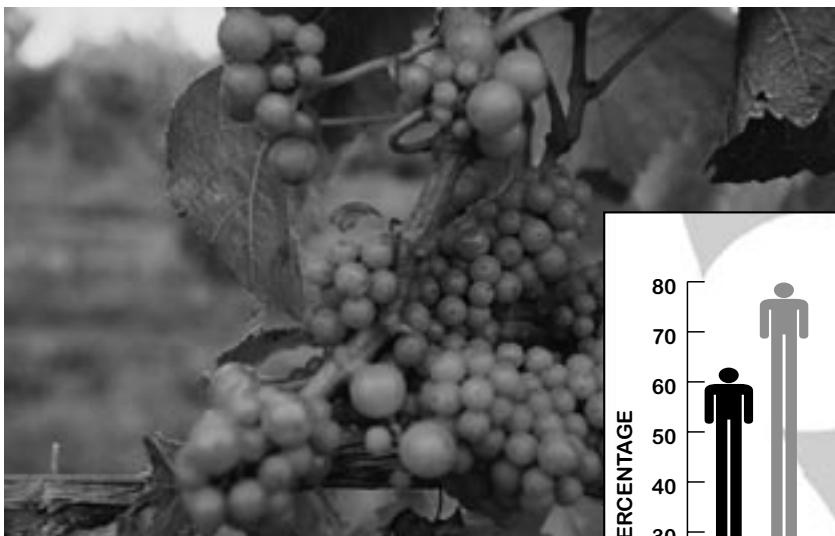
www.gisborne.govt.nz
www.gisbornejobs.com
www.edgenz.com

• Horticultural Product Processing and Manufacturing

The Gisborne District is a "food bowl", where highly fertile alluvial soils and an ideal combination of long sunshine hours and moderate rainfall underpin a strong horticultural sector. The approximately 10,000 hectares (24,700 acres) of flat horticultural land are uniquely suited to the cultivation of flowers, herbs, squash, sweetcorn, broccoli, lettuce, onions, pumpkins, kumara, carrots, persimmons, tomatoes, avocados, olives, grapes, kiwifruit, nashi, melons, persimmons, apples, citrus fruit and trees.

Cedenco Foods Limited
Advanced Meats
Coxco Limited
LeaderBrand

Sunrise Coast
First Fresh New Zealand
Convenience Foods



• Cereal Crop Processing and Manufacturing

Companies in the district specialise in the production and supply of maize and corn hybrids and other vegetable seeds, and the milling of grain for food manufacturers to turn into snack food products. Popcorn is a speciality, and the district also supplies cereal processors such as Hubbards.

Walter Findlay Limited
Corson Grain Limited

Genetic Technologies

• Agriculture

Agriculture is the leading rural sector industry and continues to dominate the Gisborne land. High quality breeds are continually evolving, and the experienced farmers of the district and the diversity of land managers hold Gisborne above other regional centres. Innovative processing facilities have taken the place of traditional processing chains, adding value to the meat and wool industries.

Progressive Gisborne Limited
Tangihanga Station
Lane Bros. Angus Bulls

Mangatu Blocks
Whangara B5
Turihaua Station

• Wood Processing Industry

The combination of forest plantation capability and current wood-using industry activity, existing and projected markets and return on investment, has translated to commercial opportunity and the generation of \$60 million annual sales (US\$24million).

Juken Nissho Limited
Pine Saw Mills NZ Ltd
Richardson Mill

East Coast Pulp Processing
Larsen Sawmilling Ltd
Huaguang Forests Ltd

• Dairy Product Manufacturing

While Gisborne District is not well known as a dairying area, two companies have had significant successes in the manufacture and marketing of niche dairy products.

Gisborne Milk Co-op Limited

Waimata Cheese Company

• Wine

Gisborne is one of the three main grape-growing areas in New Zealand. Here 1,724 hectares (4,186 acres) support seventeen wineries producing 26,597 total tonnes of grapes, almost 20 million litres - 5.3 million American gallons or 4.4 million British gallons - of wine annually. The Gisborne area is known as the Chardonnay Capital of New Zealand. Gisborne is the home of New Zealand's largest winery. There are also a number of great crushing plants and propagator in the city.

The Millton Vineyard
Waiohika Estate Vineyard
TW Wines
Montana Wines Limited
Riversun Nursery

Amor Bendall Wines
Matawhero Wines
The Works
GisVin Ltd

• Beer and Cider Manufacturing

Gisborne is the centre of production of more than 2 million litres - 0.48 million British gallons - of premium quality apple cider every year for the New Zealand and Australian markets. A line of fruit wines and ginger beer produced in Gisborne has recently been introduced.

Sunshine Brewing Company Ltd **Bulmer Harvest**

• Apparel Manufacturing

Gisborne is home for one of New Zealand's largest hosiery manufacturers, as well as manufacturing of distinctive clothing lines.

Ngaru Toa Clothing **Tolaga Bay Cashmere**
Columbine Industries Ltd **Company**

• Pharmaceuticals

This district is renowned for its highly active and therapeutic Manuka oil and honey. Oils, creams, toothpaste and dressings are just a few of the products in this emerging industry. Bee Keeping is the front edge of an exciting, emerging industry with potential high growth.

Tairawhiti Pharmaceuticals **East Coast Bee Growers**
Association

• Pultruded Products

Leading edge technology is evident in one of only a few companies in the world that specialise in the modern technology of pultrusion - a continuous process for manufacturing uniform cross-sections of filament-reinforced profiles. The Gisborne company exports to more than 50 countries.

Pultron Composites Ltd

• Surf Board Manufacturers

With its world-renowned surfing waters, Gisborne is a prime region for the production and testing of high quality surfboards. These boards are distributed nationally.

New Wave **The Boardroom**
Action

• Fisheries & Aquaculture

Gisborne is the hub for several fishing and marine businesses. Gisborne services New Zealand and overseas markets on a daily basis providing fresh Gisborne ocean products. Turanganui-a-Kiwa is in the process of establishing a crayfish and paua operation.

Moana Fisheries **Gisborne Fisheries**

• Printing and Publishing

Gisborne has a wealth of high technology printing and design companies, with one key company dominating the New Zealand can label market. The creative talents are well recognized in the many promotions and publications delivered from the region.

Te Rau Creative Design & Print **Apple Art Works**
ESP Design **Design Arts**
Logan Print

• Communications

Gisborne's local newspaper, The Gisborne Herald is an asset to the region. Owned and managed by local businessman, Michael Muir, the popular daily publication focuses on local and community events, news and entertainment.

The city is connected to the world via the latest in communication technology (cell phones, computers, email, video conferencing, etc.).

The HB Williams Library is one of New Zealand's outstanding public libraries. Extraordinary services attract leisure readers as well as business researchers.

Residents of Gisborne and District have a choice of 13 radio stations and the City receives good television reception. There are various graphic and internet design specialist businesses operating in Gisborne.

Webfoot
The Edge

SurfCity TV
Gisborne Media Centre

www.gisborneherald.co.nz

• Professional Services

Like most other New Zealand cities, Gisborne is well serviced by a committed group of professionals providing accounting, legal, financial planning, engineering and other professional services.

International Links

The range and diversity of processing and business activities in the Gisborne District, and the demonstrable successes in penetrating and holding national and overseas markets, are fundamental to the robust local economy.

The **internationalisation** of the District's processing industry overall is underlined by the proportion of total sales earned through exports to other countries. Main sectors include:

- wood products - 88% of total sales are earned from exports
- food and beverages (not including wine) - 34%
- wine - 31%
- apparel - 20%



Sister Cities

Gisborne, Macedon Ranges Shire, Victoria, Australia

Palm Desert, California, USA

Nonoichi, Kanazawa, Japan

Sister Port

Gamagori, Aichi, Japan

Friendly City Relationship

Rizhao, Shandong, China

Basic Locational Factors for Business

The Gisborne District is geographically secluded but it is not isolated.

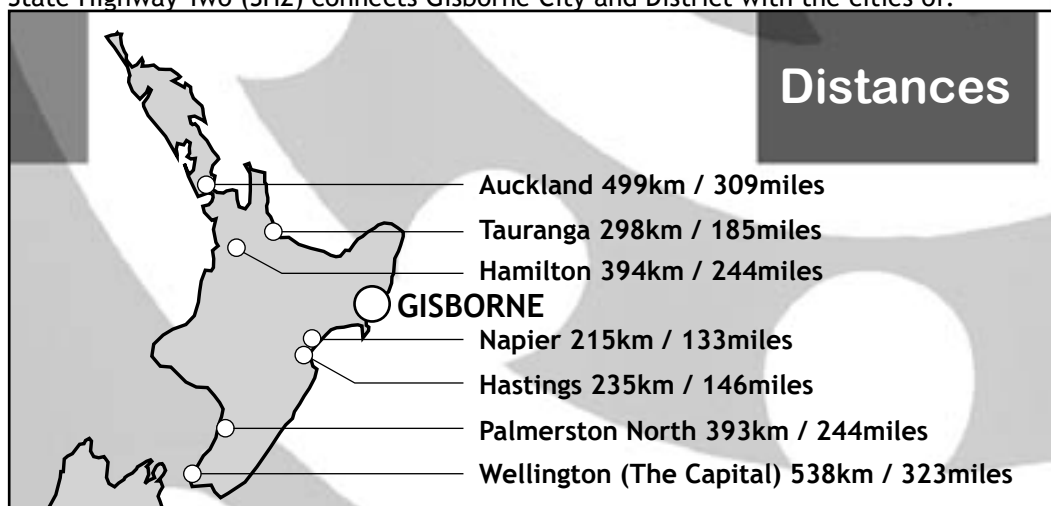
Gisborne City is only a one hour flight from both Auckland and Wellington, and less than 3 hours drive from two major cities.

From Gisborne all significant New Zealand centres (population 3.8 million) can be reached in 2½ hours using a combination of road and air travel.

Sydney and Melbourne, Australia, are 2½ hours' flying time from any of New Zealand's international airports. Together, Australia and New Zealand constitute a market of over 21 million people.

• Roads

State Highway Two (SH2) connects Gisborne City and District with the cities of:



• Air

Gisborne Airport is just a five minute drive from the city centre. Air New Zealand Link, operated by Eagle Airways, provides the main service and offers return services to Auckland 33 times a week and to Wellington 26 times a week. Other airlines also provide regular scheduled services.

Sunair Aviation
VIP Charter

Gisborne Air
Ansett First

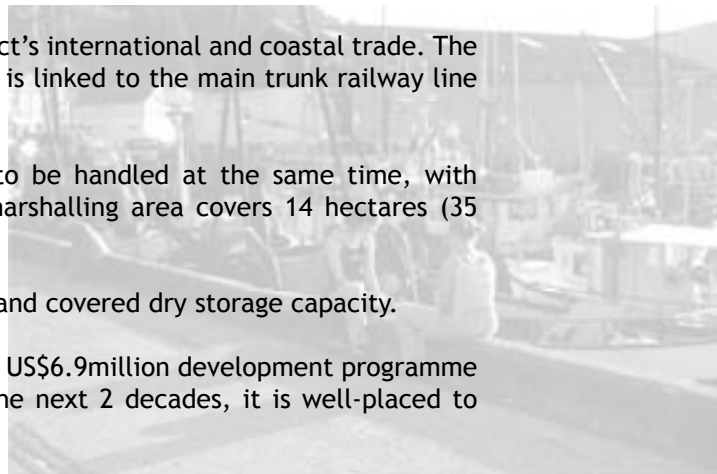
• Port

The Port of Gisborne is a key facility in the District's international and coastal trade. The port is the third-largest new exporter of logs. It is linked to the main trunk railway line and to road transport facilities.

Wharf accommodation allows for two vessels to be handled at the same time, with a maximum overall length of 330m. The log marshalling area covers 14 hectares (35 acres).

The port offers both refrigerated storage space and covered dry storage capacity.

In March 2000, the Port of Gisborne completed a US\$6.9million development programme and with further development proposed over the next 2 decades, it is well-placed to meet the challenges of the 21st century.



Utilities

Eastland Network operates a reliable, high capacity network of power lines and substations covering the entire District. The **electricity** system is easily expandable to service additional small- to medium-sized industrial and commercial operations. Almost all of the Gisborne urban area is reticulated for **natural gas**. This is used by the major industries for heating and processing. Urban **water** is treated. Resources can meet the needs of new industry.

Housing

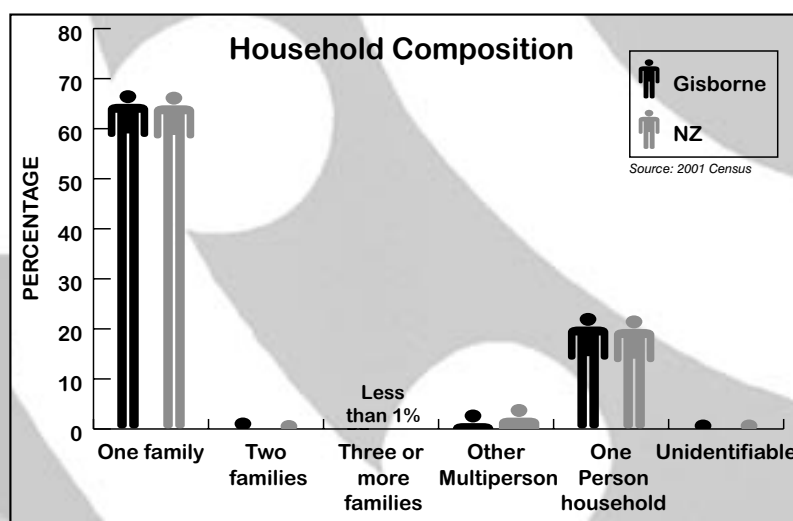
Gisborne District has a wide range of housing types and styles, from colonial homesteads through to modern architecturally-designed houses.

Real estate prices in Gisborne present good opportunities for out-of-town buyers. Overall, house prices are lower than in the metropolitan centres and in most other provincial cities.

Prices range from NZ\$55,000 to NZ\$600,000 (US\$22,000-240,000). The average Gisborne house price is NZ\$130,000 (US\$52,000).

Commercial and industrial space is also available at moderate rates. Prime, low-cost industrial land close to the railway and near the export port is available. In particular, these sites might attract food processing enterprises or high-tech manufacturing plants.

As part of its commitment to the economic development of the region, Gisborne District Council is open to discussion and review of zoning matters to try to accommodate the special requirements of new businesses.



General Statistics of Gisborne

The region is a unitary authority and therefore has the responsibility of both a district and regional council.

Location	Latitude	38.40 South
	Longitude	178 East
District Land Area	8,265sq km	3,191sq miles
Population	44,000	
Coastline	300km	
Bright Sunshine	2,200 hours/year	
Rainfall	1,060 mm/year	42 inches/year
	113 days/year	
Temperature - Daily Average	14°C	57°F
Temperature - Mean February	19°C	66°F
- Maximum February	24°C	75°F
- Minimum February	13°C	55°C
Temperature - Mean July	9°C	48°F
- Maximum July	14°C	57°F
- Minimum July	4°C	39°C
Temperature - Maximum on Record	38°C	100°F
Fog	42 days/year	
Frost (at ground level)	41 days/year	



...we want you to know first hand

"Coming to Gisborne in 1999 was like what many of the locals love to do ... catching a wave that continues to roll.

"Having a business in Gisborne sure has its benefits not the least of which is local desire to support local businesses, especially owner-operated ones. As a result our business is one of the leading stores nationally within our Franchise of 36 stores, a story often repeated for Gisborne businesses.

"An added bonus is that we feel safe that our children can walk or cycle to school. While we are still a taxi service for after school activities, all the facilities are here and in close proximity.

"And of course if you get time for recreation, the beaches, golf courses and walking tracks are on your door step and the "big" towns are just an hour away by plane.

"So come on over and catch our wave too ... there's still plenty of room!"

Neville & Karen Parkinson
Owner/Operators, Books & More

"Logans is a Gisborne based label printer with customers in Australia and throughout New Zealand. We operate in a business environment of long-term supply contracts where consistent quality, reliable service and competitive pricing are the primary drivers. We are able to deliver these on a sustainable basis by playing to the strengths of our location in Gisborne, such as stable staff and lower operating costs, and avoiding the weaknesses caused by our geographic location.

"Digital communications, which enable us to instantly send and receive graphic and data files, have virtually removed geographic constraints from our pre-press and business activities.

"We believe we have the best of both worlds by living and operating in Gisborne. We enjoy a balanced lifestyle with a good mix of family, recreation and career, which ultimately translates into personal satisfaction and commercial success."

John Logan
Managing Director, Logans

"An attractive salary package in a "corporate" looking business, coupled with lifestyle were, and still are, the drawcards for me to live in Gisborne.

"An 8 hour day... five minutes travelling to anywhere ... home for lunch... out the office door at 5pm & off to the gym, beach ... whatever.

"The awesome climate, beaches, the bush, the great outdoors, on my doorstep ... not having to get up at 6.00am to get in the traffic to get to work at 8.30am.

"I re-gained about three hours a day of my life!"

Carol McCormick
Consultant and Director
Future Difference Management

"For me, living in Gisborne means a balanced lifestyle. Since I returned to my hometown, I seem to have more time in each day. I can fly to Auckland for the day and still spend less time travelling than I often spent daily when living in Auckland.

"Gisborne's relaxed pace allows me to fit in all the 'extra' activities I want in my life - swimming, yoga, cups of coffee with friends and family. All this... and a consistently sunny climate, blue skies and quiet beaches."

Kathy Crockett
Freelance Journalist

"Our Harvest brand is now the market leader in the cider category and its brand values are intertwined with the Gisborne lifestyle.

"We were able to rapidly gain "local bigness" which gave us the underpinning volumes and confidence to expand throughout the country. Had we tried to launch a new product such as cider from say an Auckland base this initial support would have been much harder to get. Today we find that having "made in Gisborne" on every bottle is a plus with most New Zealanders having an increasing respect for wine and food produced in this district. I consider myself very lucky in being able to do business all over the country from a Gisborne base."

Brian Shanks
Managing Director, Bulmer Harvest Cider

"I moved from Auckland to Gisborne nearly four years ago and it has been a great move. The work load is challenging and the natural aspects of the district allow me to "play" on a year round basis giving me a far more satisfying and complete life style than I was able to achieve in Auckland."

Michael Parkin
Director, Gisborne Group Architects

Links: Real Estate Agents

Bayleys Gisborne

374 Gladstone Rd, Gisborne
Ph (06) 868 4970, Fax (06) 868 5189
Web: www.bayleys.co.nz
email: enquiries@bayleysgisborne.co.nz

Brenton-Rule Estate Agents

15 Graham Rd, Gisborne
Ph (06) 868 4970
Web: www.destinationgisborne.co.nz/lifestyle/brenton-rule.htm
email: brenton-rule@clear.net.nz

Harcourts Gisborne

Cnr Grey St & Childers Rd, Gisborne
Ph (06) 868 9977
Web: www.harcourts.co.nz
email: harcourtsgisborne@xtra.co.nz

Harveys Ball & Crawshaw

98 Peel St, Gisborne
Ph (06) 867 9679 or 0508 88 99 88
Web: www.harveys.co.nz
email: sales@firstcity.co.nz

Home Rental Services

Treble Court, Bright St, Gisborne
Ph (06)867 7747
email: bojack@xtra.co.nz

Hawke's Bay Realities

Gisborne Office
2 Peel St, Gisborne
Ph (06) 863 0680, Fax (06)863 0681
Web: www.realenz.co.nz
email: lynne@hbrealities.co.nz

L J Hooker

Treble Court, Peel St, Gisborne
Ph (06) 867 9947
Web: www.ljhooker.co.nz/gisborne
email: gisborne@ljh.co.nz

Miller Reality

13 Salisbury Rd Gisborne
Ph (06) 867 0568

Osler First National

Level 1, Albert Buildings, Peel Street, Gisborne
Ph (06) 8687039, Fax (06) 8674227

Ritchie Real Estate

129 Ormond Rd, Gisborne
Ph (06) 868 4443 or 0800 342 663
Web: www.realnz.co.nz/ritchie
email: rre@xtra.co.nz

Williams & Kettle

In conjunction with Oslers First National MREINZ,
Cnr Disraeli St & Gladstone Rd, Gisborne
Ph (06) 867 6809

Wrightson Real Estate

21 Solander St, Gisborne
Ph (06) 868 4029

Links: Education

Campion College is a Catholic co-educational high school based in Gisborne.

Web: www.catholic.org/newzealand/hamilton/schools/ccg/home.html

Gisborne Boys High School

email: gisboys@xtra.co.nz

Gisborne Girls High School caters for international students.

Web: www.gizbiz.co.nz/gghsintl/

Gisborne Intermediate

Web: www.gisint.co.nz

Ilminster Intermediate

email: ilminster.i@xtra.co.nz

Lytton High School - The largest co-educational state Secondary School in the Gisborne district.

Web: www.lytton-high.school.nz/

Ngata College

email: ngatacollege@xtra.co.nz

Tairāwhiti Polytechnic - based right here in Gisborne city

Web: www.tairāwhiti.ac.nz

International Division of Tairāwhiti Polytechnic

Web: www.international-english.ac.nz

Te Waha O Rerekohu Area School

email: rerekohu@xtra.co.nz

Te Wananga o Aotearoa

email: customerservice@twoa.ac.nz

The Open Polytechnic

Web: www.openpolytechnic.ac.nz

Tolaga Bay Area School

email: tolaga.school@uawa.ac.nz

Waikohu College

email: waikohu@xtra.co.nz



Contact

Economic Development Unit, Gisborne District Council

Street Address:

Fitzherbert Street
Gisborne, New Zealand

By Mail:

Economic Development Unit, Gisborne District Council
PO Box 747, Gisborne
New Zealand

Phone:

+(64 6) 867 2049

Facsimile:

+(64 6) 863 1080

Email:

info@gisborne.govt.nz

Website:

www.gisborne.govt.nz

For electronic copies of this publication, refer to the Gisborne District Council website and please feel free to link us to your own site

www.gisbornejobs.com

Gisborne Region



This publication is brought to you with funding from Work and Income NZ and the Economic Development Unit, Gisborne District Council.

www.gisbornejobs.com

www.gisborne.govt.nz



Photos courtesy of Diana Dobson Gisborne Herald.

Disclaimer:

Selection of information and business names used in this publication were purely as a summary introduction to the industries and Gisborne District to raise awareness to the reader. There was no intention of bias in the selection.

