

Court Markings - Floor

There are four court markings on the floor:

1. The short Line
1. The half court line
2. The right service box
3. The left service box

All court markings must be 50 mm wide and contrast in colour to the adjoining surfaces and all floor markings must be of the same colour.

All court markings shall be straight to within plus or minus 2 mm in three metres.

The Short Line which runs parallel to the front & back walls of the court is 4260 mm from the back wall.

The Half Court line runs from the back wall to the Short Line and is parallel to and equidistant from each of the side walls.

Each service box is square with internal sides of 1600 mm.

Procedure to Apply Tape

1. Apply to a clean, dry & dust free surface
2. Once the tape is applied, cut with a razor blade at intersections & obvious places where wearing out occurs, to prevent accidental lifting & to help with ease of replacement.
3. To remove existing tape, use a hairdryer / heat gun or something similar.
4. Scotch Brand 471 Vinyl Tape is the recommended tape to use.
5. Two rolls per court needed
6. Tape can be purchased from Squash NZ at \$45 per roll which includes GST, postage & packing.

Court Lighting

Lighting Installation

The court must be lit by artificial light. The level of illumination, measured 1000 mm above the finished floor level, has a recommended standard of 500 lux. The minimum standard is 300 lux. For Television lighting the standard is 1200 lux.

The walls of the court shall be lit in such a way as to appear evenly and uniformly illuminated and the lux levels shall not vary at any point by more than 15% from the average level of illumination.

The lighting shall be shadow free and free from any stroboscopic effects.

In order to provide even illumination to the side walls, open ended angled reflectors should be used and all reflectors should have slotted top sections to allow the light to reflect on to a light coloured ceiling finish.

Where a glass rear wall is used the level of lighting in the area outside the court should be of the same standard as the lighting on the court.

Companies Specialising in Court Lighting

Lamp Specialists

57C Hillside Road
Glenfield
Auckland
Ph: (09) 444-2297 Fax: 0800 526-777
[email: LAMPSPECS@lighting.co.nz](mailto:LAMPSPECS@lighting.co.nz)

Philips Lighting

2 Wagner Place
Mt Albert
Auckland
Ph: (09) 815-4000 Fax: 0800 454-448
www.philips.co.nz

Thorn Lighting

399 Rosebank Road
Avondale
Auckland
Ph: (09) 828-7155 Fax: (09) 828-7591
www.thornlight.co.nz

Coloured Courts

There can be no more than three different colours on the floor and wall playing surfaces within the court.

Each of the side walls shall be of the same colour.

The front wall may be two colours, one below and one above the service line. The front wall colours need not be the same colour as the side walls.

All colours are to have a minimum reflectance value of 50% and all colours must be of the same reflectance value + or – 10%

Colours are permitted on all new and existing courts providing that the average illumination does not fall below the recommended standard of 500 lux or the minimum standard of 300 lux.

Stripes or patterns of any type will not be permitted on the wall playing surfaces except on the front wall at a minimum height of 3600 mm above the floor where a logo, club or sponsors name may be used provided it is not more than 750 mm square and is located central on the front wall.

The minimum reflectance value of any of the colours used in any name or logo shall be 30%

The tin may be of any colour and contain advertising, logos, club or sponsors names providing no part has a reflectance value of less than 30%

Before painting existing court walls they should be thoroughly cleaned with Resene Graffiti Cleaner and any flaking paint must be sanded off and cracks and holes filled with an Epoxy filler.

Paint Supplier

The recommended paint supplier is: Resene Paints

For further information phone: 0800 RESENE or visit the Resene website

www.resene.co.nz

Resene

Squash Court Coating

Resene Squash Court Coating is a two pack waterborne epoxy especially developed for coating squash court walls to give a durable, tough coating with excellent resistance to abrasion. The waterborne formulation overcomes the problems associated with the use of solventborne products in areas of restricted ventilation.

It has unsurpassed adhesion to appropriately prepared surfaces, and excellent resistance to chemical solvents and water. It is tolerant of application over damp surfaces. Available in off-white and a limited range of pastel colours.

Resene Squash Court Coating is easy to apply by brush, roller or airless spray, and can be applied by either volunteers or professional contractors. Allow system to cure for a minimum of 48 hours before the court is recommissioned. At lower temperatures this may need to be extended to avoid damaging coatings. Full cure will take up to 5 days.

Squash Court Coating is supplied as a 6 Litre unit that will require a separate mixing container if a full unit is to be used. Mix only the amounts that can be applied during the 90 minute pot life. Two unit packs of mixed material will provide sufficient product to apply one coat to the squash court playing area.

To Coat a New Surface:

Cementitious surfaces must be clean and free from release agents, oil, grease and laitance.

- Fill holes and surface cracks with Resene Epox-O-Bond Filler.
- Apply two coats of Resene Squash Court Coating by brush or roller, allowing at least 24 hours between coats OR apply one coat by airless spray.

To Recoat Previously Coated Courts:

Repaints require the existing coating to have good integrity and adhesion. Resene Squash Court Coating should only be applied over old Resene Squash Court Coating or similar products in sound condition. If this is not the case, complete removal of the existing coating is required.

- Wash with Resene Graffiti Cleaner (refer Data Sheet RA101).
- Thoroughly scrape and sand to remove all loose and flaking paint and to provide a mechanical key for subsequent coats. Sand areas of flaked paint to a feathered edge.
- Fill holes and surface cracks with Resene Epox-O-Bond Filler.
- Apply two coats of Resene Squash Court Coating by brush or roller, allowing at least 24 hours between coats OR apply one coat by spray.

Court Markings:

In all cases we recommend either red adhesive stickers or Resene Uracryl 403 (refer Data Sheet RA56) to produce court markings.

Refer to Product Data Sheet RA406 for further technical information, or call 0800 RESENE (0800 737 365). Resene Squash Court Coating can be ordered from your nearest Resene ColorShop.

Resene Paints Limited

32-50 Vogel Street, Lower Hutt, New Zealand. P.O. Box 38-242, Wellington Mail Centre.

Telephone: (04) 577 0500 Fax: (09) 577 0600

Email: advice@resene.co.nz Website: <http://www.resene.co.nz>

Branches throughout New Zealand

Resene

Tennis Court Coating

Resene Tennis Court Coating is a 100% acrylic coating filled with graded silicas designed for use on both concrete and composite courts to give a durable, tough topping with excellent traction, and even 'slow' bounce properties tested to ITF standards. It may be used to upgrade bare bitumen or bare concrete courts or to maintain previously painted tennis courts.

Resene Tennis Court Coating is easy to apply by brush, synthetic fibre roller, spray or squeegee, and may be applied by either volunteers or professional contractors.

Both Resene products suitable for use on tennis courts - Resene Tennis Court Coating and Resene Blacktop - dry quickly ensuring that tennis courts can be coated quickly and easily and be back into action within a few days. See Data Sheet D303.



Court Markings: Use Resene Lumbersider (Data Sheet D34).



Green

10TC10



Terracotta

10TC20



Dark Green

10TC30

Resene

Squash Court Coating

Resene Squash Court Coating is a two pack waterborne epoxy especially developed for coating squash court walls to give a durable tough coating with excellent resistance to abrasion, unsurpassed adhesion to appropriately prepared surfaces and excellent resistance to chemical solvents and water. The waterborne formulation overcomes the risk of solventborne products in areas of restricted ventilation.

Resene Squash Court Coating is easy to apply by brush, roller or airless spray, and may be applied by either volunteers or professional contractors.

Supplied as a 6 litre unit, two unit packs of mixed material will provide sufficient product to apply one coat to the squash court playing area. See Data Sheet RA406. Court Markings: Use red adhesive stickers or Resene Uracryl 403 (Data Sheet RA56).



White

10SQ10



Yellow

10SQ20



Green

10SQ30



Blue

10SQ40

Resene

Grassmarking Paint

Ground markings are a critical part of all field games. Resene manufactures a specially formulated grassmarking paint, suitable for marking out lines and field areas on grass without harming the grass itself.

Available in a 10L pail in a standard colour of white. Other colours can be supplied upon volume requests.

Depending on the concentration of colour required, Resene Grassmarking Paint may be thinned by 2-3 parts water making it a cost-effective option for all field marking projects.



Resene

Kwila Decking Stain

Rejuvenate, enhance and protect your timber deck or outdoor furniture with Resene Kwila Decking Stain. Ideally suited for new or weathered Kwila, it is also ideal over other exotic hardwoods, adding colour to the timber while still allowing the natural grain to show through.

New hardwood timber should be treated with Kwila Decking Stain before assembly, paying special attention to the underside of decks, as they will be difficult to coat after the deck has been assembled. All faces of the timber should be treated with careful attention to end grains.

A Resene Kwila Decking Stain finish will typically require maintenance after 1-2 summers. Performance is related to the depth of colour applied. Light applications and dressed surfaces may require maintenance sooner, while heavier applications and rough sawn surfaces will require less maintenance.



Resene

Concrete Stain

For a more natural look, add colour to cementitious surfaces with Resene Concrete Stain, an interior/exterior solventborne acrylic stain designed to penetrate the surface of concrete and masonry to form a tough low sheen finish that protects and enhances the natural texture of the concrete.

Suitable for use on concrete driveways, paths, carports, swimming pool surrounds and light industrial floors or anywhere concrete blocks, poured concrete, paving stones and cobblestones are used.

Resene Concrete Stain is available in a range of hues. A clear gloss, Resene Concrete Conservar, is also available for protecting quarry tiles, exposed aggregate, slate and concrete from dirt, dust and other contaminants.

Resene Concrete Stain performs best on porous concrete. The desired effect may be more difficult to achieve on smooth concrete. Careful application is critical to an even finish. Care must be taken to avoid overlaps that can cause inconsistencies in the finish. See Data Sheet D58.

If tougher protection is required, use Resene Uracryl Clear.

Resene Blacktop is a cold-applied, heavy bodied, slip resistant topping for use on asphalt. Based on a bitumen emulsion with graded fillers, Resene Blacktop dries to produce a durable weather and wear resistant finish. For best results apply with a Resene Hi-Solids Roller. Ideal for use on paths, driveways, tennis courts and other recreational areas.



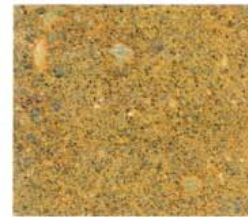
Kwila Brown



Red Terracotta 10CS10



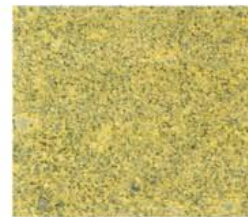
Black 10CS20



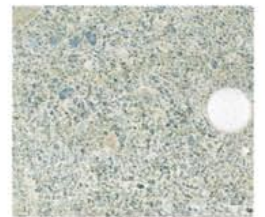
Autumn Leaves 20CS10



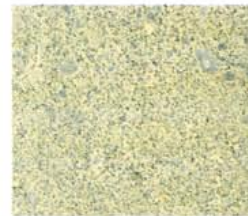
Deep Grey 20CS20



Sandy 30CS10



Bleached Grey 30CS20



Bleached Sand 40CS10



Clear
Resene Concrete
Conservar
is also available



Black



Green



Red

Colours are as close as printing process allows.